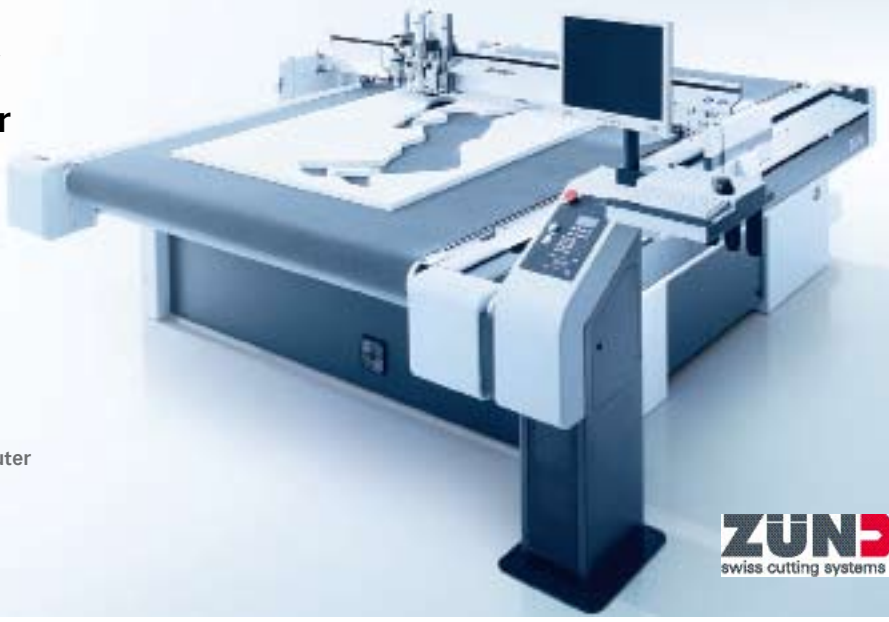


**Tools, materials, applications.**  
**G3 Digital Cutter**

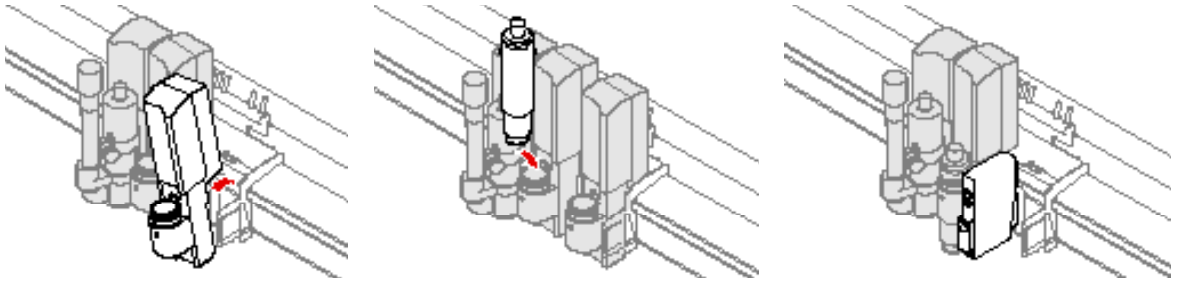


Advanced flatbed cutter/router for maximum productivity.



**One cutter, several tools, dozens of materials, hundreds of applications.**

No other machine can match the versatility and adaptability of the G3 modular cutter concept. Zünd G3 cutting/routing systems are optimally designed for 24/7 operation. They offer a combination of heavy-duty construction and superior accuracy that is completely unique in the marketplace. Unrestricted access from all sides maximizes efficiency of operation. All operator safety features are standard equipment with G3.



The cutting and creasing/scoring tools shown here can all be inserted into the Universal Module. The optional Zünd ICC camera can be freely combined with all tools, all modules. It is possible to use up to 3 Universal Modules simultaneously. The materials and applications listed here represent merely a selection of the most common ones – the possibilities provided by Zünd G3 are, of course, almost unlimited.

**Universal cutting tool**



For through-cutting materials up to a thickness of approx. 3 mm / 1/8". A spring-loaded glide shoe permits cutting very fine details. Optionally, a fixed glide shoe can be used for cutting at set depths, e.g. when cutting printing or coating blankets. With certain blade types maximum cutting speeds can be attained even when cutting rigid materials.



**Magnetic materials**



**Polypropylene**  
 Thick plastic films, PE, PET, etc.



**Cardboard**  
 Paperboard, chipboard, posterboard, matboard, paperstock, etc.



**Corrugated/honeycomb**  
 Coroplast, Akyprint, etc.



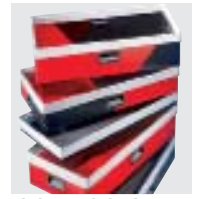
**Custom magnets**



**Clear packaging**

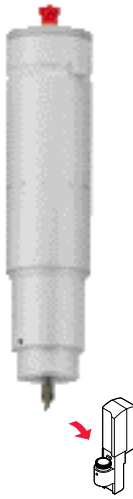


**Shipping boxes**



**Light-weight boxes**

**Kiss-cutting tool**



With variable knife pressure, this tool is ideally suited for kiss-cutting thin materials to a liner. Materials up to 3 mm / 1/8" can be cut – most at maximum speeds. An optional fixed glide shoe is available for cutting materials at set depths, e.g. reflective vinyls.



**Decorative vinyl**  
 Self-adhesive vinyl, window film, static cling, overlays, etc.



**Masking materials**  
 Masking tape, masking film, sandblast stencil, airbrush film, etc.



**Reflective materials**  
 Reflective vinyls, engineer-grade, high-intensity, diamondgrade, etc.



**Translucent materials**  
 Perforated and translucent vinyls for vehicle wraps, window graphics, etc.



**Wrapped spherical sign**



**Sandblast stencil**



**Traffic signs**



**Vehicle wrap**

**Oscillating cutting tool (electric)**



Ideal for cutting soft and medium-density materials up to 28 mm / 1" thick. Available with 0.5 mm or 1 mm stroke. The former (0.5 mm stroke) is recommended for cutting materials up to 3 mm / 1/8" thickness at maximum speed. The tool with 1mm stroke is recommended for thicker materials.



**Foam materials**  
 Foamcore, foam composites, and similar materials, such as rubber, felt, etc.



**Corrugated cardboard**  
 Single-wall corrugated board, carton, paperboard, etc.



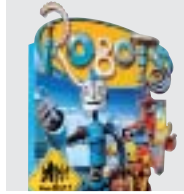
**Leather**  
 Top-grain, shoe leather, sole materials, man-made leather, etc.



**Woven / non-woven materials**  
 Felt, composites, prepreg, textiles, etc.



**3D Lettering**



**POP displays**



**Shoes**



**Felt tote bag**

**Headquarter**  
**Zünd Systemtechnik AG**  
 Industriestrasse 8  
 CH-9450 Altstätten  
 T +41 71 757 81 00  
 F +41 71 757 81 11  
 info@zund.com  
 www.zund.com



## Oscillating cutting tool (pneumatic)



In comparison to the electric oscillating tool, the pneumatic (air-driven) oscillating tool is more powerful and therefore designed for cutting denser, tougher, and thicker materials up to 50 mm / 2".



**Sandwich board**  
X-board, Re-board, honey-comb, etc.



**Foam**  
Polystyrene and polyurethane foams, EPS, and similar materials



**Corrugated cardboard**  
Triple wall corrugated board, thick carton, etc.



**Rubber**  
Natural rubber, silicone, latex, EVA foam, sponge rubber, etc.



**Exhibits**



**Cushioning materials**



**Custom packaging**



**Ejection rubber**

## Driven rotary tool



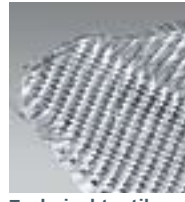
This tool is designed for cutting fibrous, porous materials, including fabrics, technical textiles, and composites. The driven rotary tool produces a clean cut at maximum speeds.



**Mesh**  
Translucent textiles, fabric banners, polyester, knits, etc.



**Textiles**  
PVC scrimmed banner materials, rubberized fabrics, Lycra, Spandex, etc.



**Technical textiles**  
Uni- and bidirectional carbon fiber, Kevlar, dry weaves, prepreg, etc.



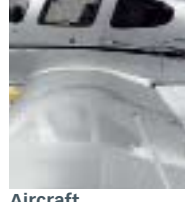
**Balloon materials**  
PVC fabrics, rubberized and waterproof materials, synthetics, etc.



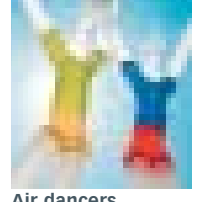
**Building wraps**



**Feather flags**



**Aircraft construction**



**Air dancers**

## 1 kW router



Exceptional speed, productivity, and versatility distinguish the Zünd router. The 1 kW spindle inserts into the routing module and is designed for routing hard, dense materials up to a max. thickness of 26 mm / 1", softer materials up to 50 mm / 2" thick. Thinner rigid materials (up to 5 mm / 3/16") can be routed considerably faster than with conventional CNC routers.



**Rigid foam core**  
Gator foam, Forex board, expanded PVC, styrene, etc.



**Acrylics**  
Plexiglas, PMMA, Lexan, polycarbonates, etc.



**Aluminum composites**  
Di-bond, Alupalite, Alucore, Reynobond, rightBOND, and many others



**Wood**  
MDF, MDO, pressboard, plywood, fiberboard, veneer, and other wood products



**3D Displays**



**Acrylic furniture**



**Exhibits & kiosks**



**Table plate**

## V-cut tool



The seemingly impossible made nearly commonplace: 3D structural designs with the V-cut tool. This unique tool is ideal for cutting extremely rigid sandwich board materials at 15°, 22.5°, 30°, and 45° angles. Depending on material density, thicknesses of up to 16 mm / 5/8" can be processed.



**Sandwich board**  
X-board, Re-board, dense honey-comb, and similar materials



**Foam composites**  
Foamboards, Kapaplast, Kapamount, Foam-X, Egafix, etc.



**X-board**



**Brochure holder**

## Creasing tool Type 1



The crease tool type 1 is designed specifically for creasing multiple-wall corrugated cardboard and plastic thicknesses up to thicknesses of 7 mm / 1/4". The large diameter of this type of crease wheel permits creasing of thicker materials cleanly and with considerable down pressure, without breaking or tearing the top sheet.



**Corrugated cardboard**  
Double-wall corrugated board, medium-weight packaging



**Honeycomb materials**  
Coroplast, Akyprint, etc.



**Corrugated box**



**Coroplast box**

## Creasing tool Type 2



Several creasing wheels in different widths and radii are required for creasing/scoring paper, carton, polypropylene, and PVC materials. A complete set of tools is available for Type 2, ensuring perfect creases in a wide range of commonly used materials.



**Polypropylene**  
Softer, flexible plastics, thermoplastics, and similar materials



**Folding carton**  
Thick paper/card stock, folding carton, posterboard, etc.



**Packaging**



**Dispenser**